



 AXifeed[®] 21

Helping mothers provide breastmilk for babies

“There’s no milk like mum’s milk”

It is well documented that breastmilk is best for babies and no one would question the benefits for both mother and baby. At AXifeed we are in the business of helping you to keep it that way.

We have over 30 years experience in helping mums provide breastmilk for babies and are confident that we provide the best and most comprehensive range of products to help collect milk, keep it safe and deliver it!



EBM storage bottles

The safest bottle for EBM and special feeds

The AXifeed 21 bottle and cap range is the only comprehensive truly tamper-evident system, providing clear verification that feeds are safeguarded from accidental or deliberate contamination.

Our bottles support risk management procedures for milk bank and neonatal units and have always only contained the very best materials that are also 'Bisphenol A' and Pthalate free.

Whether used for delivering mothers own milk, donor milk or special feeds the highest level protection is assured for new born, premature and sick babies.

- **Bottles have always been Bisphenol A and Pthalate free**
- **Made from high density polyethylene (HDPE)**
- **Easy to use**
- **Sterile and ready to use**
- **Contoured shape for improved handling and storage**
- **Tamper evident caps mean that you can see that the bottle has not been opened previously**
- **Clearly and accurately calibrated**
- **Peace of mind for transporting feeds - colour coded tamper evident re-sealing caps available**



AXifeed 21 200ml



AXifeed 21 100ml



AXifeed 21 50ml

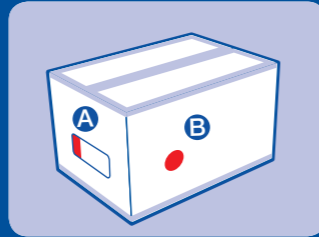
Product codes

2050	50ml	(Carton of 240)
2100	100ml	(Carton of 100)
2200	200ml	(Carton of 100)

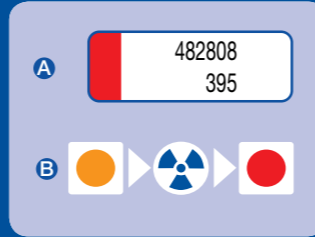
...is risk an option?

Can you be sure that your breastmilk storage is contamination free and safe? With the AXifeed 21 bottle system you can be absolutely sure and confident - this is why:

Following exhaustive testing and research we only use the safest and most reliable system available for the sterilisation of all our bottles - 'electron beam irradiation'. Our bottles are not simply sterilised, they are sterile*. This process gives you the peace of mind that breastmilk is truly contamination free and safe. Our labelling and packaging details are explained in the diagram opposite.



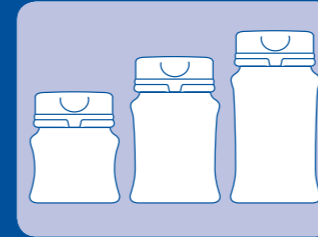
1 The transportation box is tape sealed on all opening edges to prevent dust contamination and then labelled.



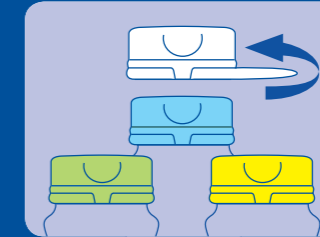
2 Your guarantee is the Irradiation Centre's own label identifying a 'Lot Traceable Number' 'A'. Box and contents are irradiated leaving contents sterile and ready to use. Irradiation is verified by an orange 'dot' which turns red when sterile 'B'.



3 Sterile bottles can be removed and the bag re secured using the tie. This leaves the remaining bottles dust free whilst in storage.



4 All bottles removed from the sterile pack have visual tamper evident bands. The bottles are sterile, safe and ready to use.



5 Once filled, bottles can be re-sealed (sterile) with colour coded caps denoting:
Blue - Donor breastmilk
Peppermint - Special feeds
Yellow - Special feeds

A Certificate of Conformity, relevant to your bottle 'Lot Traceable Number', is available on request.

*Sterilised to Method 1. Every bottle is traceable and, as is required and is expected by most progressive hospitals nowadays, documentary proof of the sterility is available.

AXifeed 21 bottles and caps are manufactured and sterilised in the UK

Tamper evident caps - for peace of mind

Our colour coding cap system ensures the integrity of the feed from source to baby.

To re-tamper proof, simply push lid firmly down on to bottle and screw tight



To open bottle and remove seal, unscrew lid and pull away seal



Product codes

2400 Peppermint

Carton of 300 (12 packs of 25)

2500 Blue

Carton of 300 (12 packs of 25)

2600 Yellow

Carton of 300 (30 packs of 10)



WHITE

Visual indicator that band has been removed. Cap can now be used normally



BLUE

Specially designed for use by human milk banks to easily identify donor breastmilk



YELLOW

Both specially designed for SAFE and SECURE identification and transportation of breastmilk and special feeds



PEPPERMINT

“Recent studies show that babies who are exclusively breastfed for 6 months are less likely to develop ear infections, diarrhea, and respiratory illnesses

...They may also be less likely to develop childhood obesity.”

feeding cup

Feeding cup

- **Sterile and ready to use**
- **Unique reservoir design**
- **Made from clear, food approved polypropylene**
- **Pliable and easy to clean**
- **User friendly design suits single hand use**
- **Graduated 40ml capacity**

Developed following intensive research and feedback from neonatal professionals, the AXifeed sterile ready to use feeding cup is specially designed to provide a measured and controllable flow of milk.

Product code

2800 (Carton of 50 individually wrapped)



**“While
breastfeeding
may not seem
the right choice
for every parent,**

it is the best choice for every baby.”

 AXifeed® 21

Breast pumps

Source: Amy Spangle- www.breastfeeding.com/all_about/amy_spangler_bio.html

Helping mothers provide breastmilk for babies

Simplicity itself - Fisio R breast pump

- Simple and easy to use
- Stimulation mode
- Fully adjustable for both rhythm speed and pumping strength
- Dual pumping
- Highly durable construction specially designed for hospital use
- Quiet and efficient
- Neat and portable

The AXifeed Fisio R electric breast pump uses sophisticated 'rhythm' suction technology, is simple to use and provides the ultimate in comfort for the mother. The pump is easy to transport, clean and maintain.

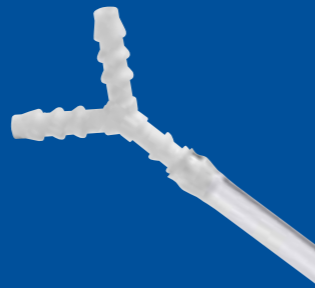
Product code
4904 R



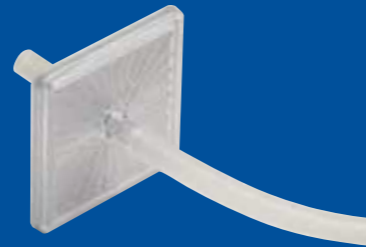
Pump accessories

Product codes

4900	Safety bottle
4918	'Y' connector
4991	Barrier filter
4996	Bottle basket
4998	Trolley stand



'Y' Connector – For dual pumping



Barrier filter - Prevents back flow of breastmilk into the pump



Trolley stand - Fully height adjustable for user comfort and assists with the safe and easy movement of pump.



Bottle basket - fits onto central pole of trolley stand and provides a handy place for bottles and wipes etc



Safety bottle - designed to prevent overflow breastmilk entering the pump

To accompany your Fisis R breast pump we offer a range of accessories to help with operational safety and maintenance.

**“Mums who
breastfeed reduce
their risk of developing
pre-menopausal breast
and ovarian cancer
and fractures from
osteoporosis.”**

Source: www.moh.govt.nz/moh.nsf/indexmh/breastfeeding-why#formothers

 AXifeed® 21

milk collecting kits



Helping mothers provide breastmilk for babies

Simple and safe - Easi Fit 3 collecting kits

AXifeed Easi Fit 3 collecting kits are designed for use with AXifeed Fisis pumps. Because not all mums are the same, 3 funnel sizes are available, providing better comfort and ease of use. Available with or without the AXifeed 21 bottle, these kits are disposable, sterile and ready to use.

- Supplied sterile and ready to use (electron beam irradiation)
- Funnel and adapter separate for easy cleaning
- Easy to use and affordable
- High quality durable polypropylene
- 3 funnel sizes: 28mm, 30mm and 32mm
- Available with or without AXifeed 21 bottle (3 sizes)



Product codes

Funnel & tubing (no bottle)

7.7100	28 mm funnel
7.7200	30 mm funnel
7.7300	32 mm funnel

Funnel & tubing with 100ml bottle

7.7110	28 mm funnel
7.7210	30 mm funnel
7.7310	32 mm funnel

Helping mothers provide breastmilk for babies



EBM Bottles

The AXifeed 21 bottle and cap range combines the ultimate, sterile and ready to use bottle with a tamper-evident cap system - providing real peace of mind.



Feeding cups

Specially designed to provide a measured and controllable flow of milk - Sterile and ready to use.



Electric breast pumps

The AXifeed Fasio R pump is simple to use and provides the ultimate in comfort and adjustment control for the mother.



Collecting kits

AXifeed Easi Fit 3 collecting kits are available in 3 sizes and are for use with the AXifeed Fasio R pump. These disposable kits are delivered sterile and ready to use.


ORTHOFIX[®]
Mother & Baby

Orthofix Limited
Burney Court
Cordwallis Park
Maidenhead
Berkshire
SL6 7BU

Tel: +44 (0)1628 594500
Fax: +44 (0)1628 789400

Email: enquiries@orthofix.co.uk

Website: www.orthofix.co.uk/motherandbaby

 **AXifeed**[®] 21

Helpline
+44 (0)845 602 6382
AXifeed@orthofix.co.uk